

# EZ GRIP™ CAPILLARY TUBE DISPENSER

## PRODUCT DESCRIPTION

This product represents the next evolution in capillary tube dispensers for safe, efficient, and rapid screening of blood plasma.

## BENEFITS

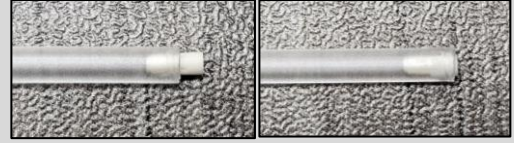
- Comfortable grip handle for improved control when dispensing fluid
- Designed for use with the Lightning™ capillary tube
- Simple push-in loading of tubes
- High reliability over a large number of uses
- Fully enclosed stainless steel plunging rod to prevent stick injuries
- One hand release for easy and clean disposal of tubes.

## SPECIFICATIONS

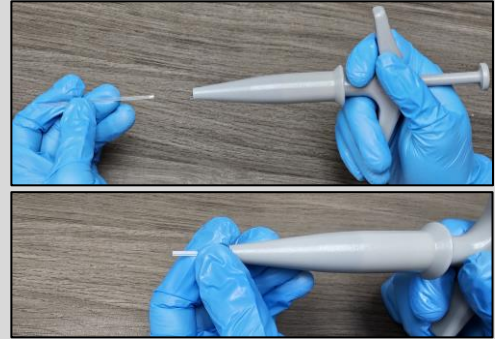
Part Number	SC-EGD-01
Size	Approximately 30 x 23 x 1 cm
Dispensing Volume	40 uL minimum
Packaging	One dispenser per package
Storage	10 – 40 C, 10 – 85% humidity
Cleaning	Compatible with rinse of isopropyl alcohol or mild detergent

## Instructions

- 1) Gather a blood sample using the SelectChoice Lightning™ capillary tube. Ensure plug is fully seated.



- 2) Insert the tube, plug side first, into end of dispenser. Slight resistance will be felt right before the tube fully seats.



- 3) When ready to dispense, depress plunger steadily to dispense sample.



- 4) Slowly release plunger to retract and set in initial position.



To remove the capillary tube:

- 1) Using the fingers and thumb of one hand, squeeze the flange of the nose back. The tube will then fall out.



- 2) The next tube is immediately ready to be inserted.